



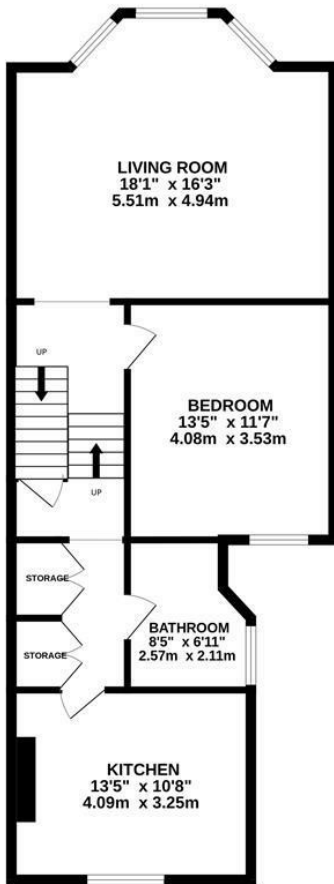
Sackville Road, Bexhill-On-Sea TN39 3JD

Offers in excess of £250,000

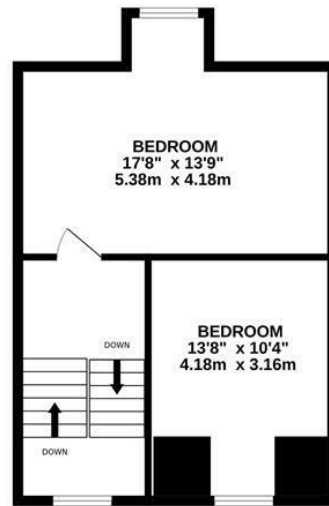


A simply stunning THREE BEDROOM MAISONETTE situated in central Bexhill. It's ideally positioned close by to the De La Warr Pavilion and a short stroll from independent shops and restaurants. Egerton Park with its duck pond, children's adventure area and outdoor gym is just around the corner while Bexhill railway station is half a mile away. Set on the SECOND AND TOP FLOOR, the accommodation here has been RECENTLY REFURBISHED to a high standard throughout and comprises of a BRIGHT BAY FRONTED LIVING SPACE which measures an impressive 18'1 x 16'3 and enjoys an ARCHED ENTRANCE and FEATURE FIREPLACE. The contemporary kitchen is fitted with modern units and enjoys ample storage and worktop space. There is a DOUBLE BEDROOM together with the STYLISH FITTED SHOWER ROOM, as well as handy BUILT-IN STORAGE located in the entrance hall. The upper floor houses two DOUBLE BEDROOMS with the primary enjoying a FRONT ASPECT DORMER WINDOW. This fantastic property would make the PERFECT FAMILY HOME or SEASIDE RETREAT and is not to be missed.

GROUND FLOOR
752 sq.ft. (69.9 sq.m.) approx.



1ST FLOOR
425 sq.ft. (39.4 sq.m.) approx.



TOTAL FLOOR AREA: 1177 sq.ft. (109.3 sq.m.) approx.

Whilst every attempt has been made to ensure the accuracy of the floorplan contained here, measurements of doors, windows, rooms and any other items are approximate and no responsibility is taken for any error, omission or mis-statement. This plan is for illustrative purposes only and should be used as such by any prospective purchaser. The services, systems and appliances shown have not been tested and no guarantee as to their operability or efficiency can be given.
Made with Metropix ©2026

